

**At Enfield Heights Academy, we are KIND, RESPECTFUL, RESILIENT and BRAVE.**  
**We are the force for positive change.**

19. 04.2024

Dear parents and carers,

Welcome to the first round-up of the summer term – the children all seem to have settled back in well and are eager to get on with their learning, which is lovely to see!

### **Maths through stories**

What a fantastic maths celebration prepared by Mrs Ubor, our Maths Lead, it was! There was such a buzz last Tuesday when Pablo, the Penguin, arrived in a special delivery box at EHA to inspire an array of mathematical puzzles. The maths inspired outfits were super cool-thank you to parents and carers for supporting the children.



### **'Community Meet Up'**

Please come to our informative community coffee mornings:

**Thursday 25<sup>th</sup> April** – 'Speech and language' information session with EHA Salt therapist

**Thursday 9th May**- 'Recognising Behaviour as Communication' workshop run by Ben Hibberd from EASA

**Thursday 20<sup>th</sup> June** – Relaunch of **Zones of Regulation** for parents

**Thursday 18<sup>th</sup> July**- Summer **Holiday wellness** and casual catch up

All the sessions will start at 9am so once you drop your child to school, please come to the Church Hall on 396-398 Hertford Road.

Please put these dates in your diaries as it would be great to see more people attending.

### **Summer 1 Term Curriculum Maps**

All curriculum maps are uploaded on to our school's website every half term to enable parents/carers to keep up to date with what the children are learning in each year group each half term. You can find them by going to Learning > Curriculum > Year Group > Year Group Curriculum.

<https://www.enfieldheightsacademy.org.uk/curriculum>

Medium Term Planning		Learning Journey Map		Term: Summer 1	Weeks: 6
Mapping curriculum content-knowledge and skills; creating cross curricular links; generating learning opportunities; composing the bigger picture					
Teaching and Learning Principles and Curriculum Driver					
<b>Equality of Opportunity</b> Raising pupil aspiration through inspiration, enjoyment and fulfilment; Access to academic excellence; Opportunity to enhance and develop skills/talent; Developing dedication and resilience  Capel Manor Gardens Experience Making a sculpture from clay. Access to different fruits and exploring through the senses. Exploring newspaper articles.	<b>Enquiry Based Learning</b> Creative thinkers; Real life challenge Risk taking; Resourcefulness; Enterprise; collaboration; Independent; Fostering and applying thinking skills  Which plants and trees grown in our local environment? What does a seed need to grow? Growing our own plant.	<b>Inspire awe and wonder</b> Use stimuli to motivate and inspire- visits, visitors, artefacts, books, videos, plays, role play etc.  Animal scavenger hunt Talk for writing- Supertato Children to read their stories to Reception and Year 1.	<b>Force for Positive Change</b> Who or what has been a force for positive change? How can we be a force for positive change?  Preserving the natural environment around the school so our plants and trees can grow (Meadow).		
<b>YEAR 1</b> <b>Title: Secret Garden</b>		<b>Key Curriculum Areas:</b> Science, D&T, RE and Art	<b>Maths</b>  <b>Place value:</b> -Counting to and across 100. -Reading, writing & representing numbers. -Using language 'more than, less than & equal too'. - Reading and writing numbers 1-20 in words and numerals. <b>Addition:</b> -Using the + & = symbols. -Writing mathematical statements. -Solving problems. - Missing number problems. <b>Subtraction:</b> -Using the - & = symbols. -Writing mathematical statements. -Solving problems. - Missing number problems. <b>Mass and Weight:</b> - Measuring, comparing, and recording. <b>Capacity:</b> - Measuring, comparing, and recording.	<b>English</b>  <b>Poetry</b> - Shape poems – Fruit & Vegetables <b>Fiction</b> -Supertato -To orally retell a story. -To write simple sentences. <b>Non-Fiction</b> - To write a newspaper report about The Evil Pea visiting EHA. <b>Spelling</b> - Summer 1 spelling list. <b>Handwriting</b> - Cursive and capital letters. <b>Guided Reading</b> - Daily sessions teaching reading skills. <b>Phonics</b> - Daily sessions teaching sounds. <b>Cross Curricular Links</b> Common and wild plants and trees.	
<b>Big Bang</b> What has kidnapped the fruit and vegetables at school?	<b>Science</b>  - To plant and bean and write a diary to observe changes over time. - To identify and describe the basic structure of a plant (root, stem/trunk, leaves, flower, fruit). - To explore what plants need water, light and a suitable temperature to grow and stay healthy. - To compare deciduous and evergreen trees. - To record plants found in our local environment. - To answer the question – Is there a pattern in where we find moss growing around the school grounds.				
<b>School Trip/Special Events</b> Capel Manor Gardens Trip – 10 <sup>th</sup> May.					
<b>D&amp;T</b> - To design, make and evaluate their own fruit platter.	<b>Art</b>  - To explore the work of Andy Goldsworthy. - To plan their own sculpture. - To make their own sculpture of out clay, using natural resources.	<b>PSHE</b>  - To identify members of our family and understand that there are different types of families. - To identify who can help me in my school community. - To discuss ways to praise myself. - To celebrate special relationships.	<b>Music</b>  - To recognize a melody and sing as an ensemble. - To listen to and discuss the lyrics of a song.		
<b>Computing</b> -To label and match objects. - To group and count objects. - To describe and object. - Comparing groups.					
<b>PE</b> <b>Indoor – Dance:</b> To perform a short dance sequence. <b>Outdoor- Striking and fielding games:</b> Striking a ball.			<b>RE</b> Who is God to Sanatanis?		

### Growing & Changing Information meeting

In preparation for our 'Changing Me' Unit of Work which will be taught in June, we will be holding parent/carer information session on 8<sup>th</sup> May at 9-10am in the school hall.

Please see a letter from Miss Cooper, PSHE and RE lead [link](#) for further information.

### Summer Term Clubs and interventions start on Monday 22<sup>nd</sup> April

The Summer term clubs will start on Monday 22<sup>nd</sup> April. There are still many spaces available in different clubs that our EHA team is dedicated to run for the children. Please check on Arbor or enquire sat the school's office. Our new 'Tennis' club with Mr Currie (who is a tennis coach outside the school) is still available. Why don't you join Science Club with Mrs Salik to experiment and test!? For sports clubs, please make sure that you are sending the children in with the relevant kit.

**Read Aloud event for Reception, Year 1 and Year 2 – Another huge prize give away!**

Parents and young adventurers in Reception, Year 1, and Year 2 are invited to our Junk Workshop on Tuesday, 23 April from 3:15 to 4:15 PM, where children can transform everyday items into creative masterpieces with their mums and dads and siblings. This free event offers hands-on activities that enhance reading skills and boost creativity by making amazing models from recycled materials. EVERYONE who comes will receive free gifts and have a chance to win prizes including arts sets, Kindles and £10 Amazon vouchers for the best models.

**CALLING ALL PARENTS  
AND YOUNG ADVENTURERS IN  
RECEPTION, YEAR 1, AND YEAR 2!**

Join us for an exciting journey into the world of creativity and imagination at our Junk Workshop! But wait, what exactly is a Junk Workshop? Think of it as a magical place where ordinary items like cardboard boxes, paper rolls, bottle caps, and more transform into extraordinary creations. It's a hands-on experience where children can unleash their creativity, build, design, and explore without limits!

**At our workshop, you and your child will:**

- Follow step-by-step instructions, enhancing their reading skills while creating amazing models.
- Engage in fun, hands-on activities using recycled materials.
- Let their imagination soar as they turn "junk" into treasure.

**TUESDAY, 23 APRIL**

**TIME 3.15-4.15PM ADMISSION: ABSOLUTELY FREE**

**FREE GIFTS TO EVERYONE WHO ATTENDS**

**WIN A PRIZE INCLUDING ARTS SETS, £10 AMAZON VOUCHERS AND MORE FOR THE BEST MODELS.**

**[enfieldheightsacademy.org.uk/Read-aloud](http://enfieldheightsacademy.org.uk/Read-aloud)**

Enfield Heights ACADEMY

### **REMINDER - Correct Uniform**

Please remember that all children must wear the correct school uniform from YR-Y6. We expect children to adhere to the school's uniform policy. You can find a quick reminder of our school uniform requirements in my previous communication [here](#).

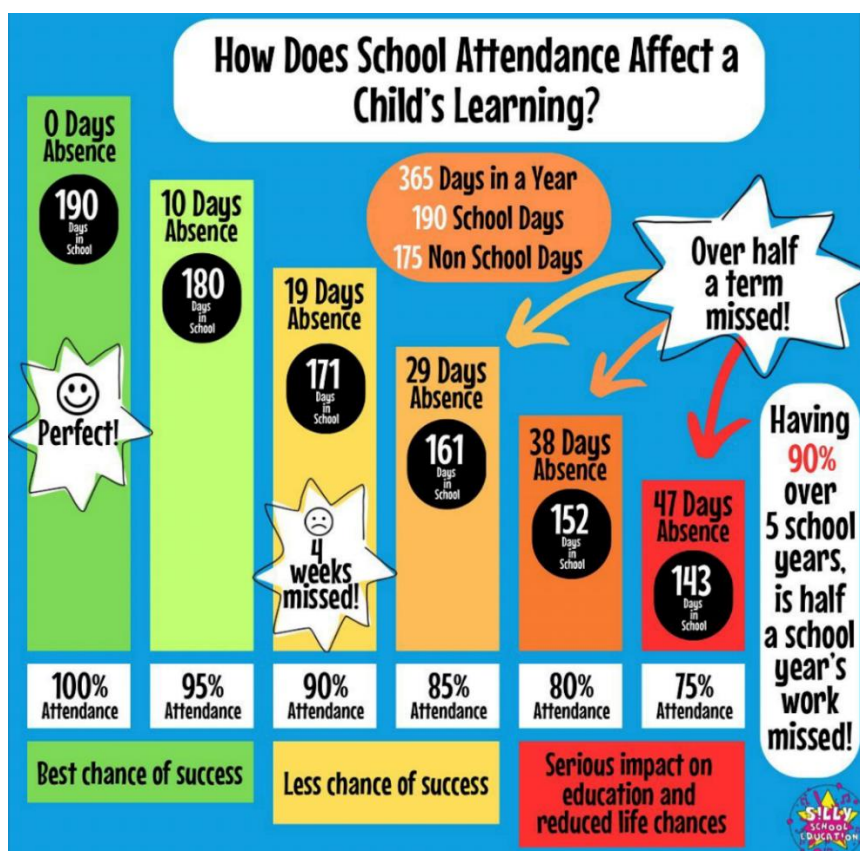


This includes all the items of uniform and ways to purchase them. Please remember that our uniform policy remained unchanged apart from a PE top: a plain white T-shirts.

Please ensure that all parts of your child's uniform are clearly labelled. Children are required to wear a white shirt not a polo T-Shirt.

### **Attendance and Punctuality**

As you know, it is really important that children do not miss school unless it is completely necessary. As a school, we do not authorise holidays during term time and regularly review the attendance of every child. Below is an important infographic showing just how important good attendance is as well as a link to support you making a decision as to whether to send your child to school or not when they are unwell: [Is my child too ill for school?](#)



If you need any help or support with helping your child to attend school, please do get in touch so that we can support you.

**Treats Sale-Fundraising**

Please support our 'Treats Stall' to raise money for school projects and resources. We would be grateful for any donation of cupcakes, cookies and cakes to our treat's sale. All donations can be given at the office on Wednesday 24<sup>th</sup> April or left in the box provided by the office entrance. Thank you in advance.

The Treat Sale will be hosted in the playground at the end of the school day on Thursday 25<sup>th</sup> and Friday 26<sup>th</sup> April.



**Enfield Heights Academy**

**Treat Sale**

**Fundraiser**



**We are raising money for school projects!**

.....

**CUPCAKES, CAKES, SOFT DRINKS TREATS, AND MORE**

.....

**Cake donations will be much appreciated.  
Please drop to the office on the morning of  
Wednesday 24<sup>th</sup> April**

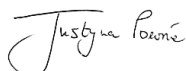


Dates for your diary

<b>Phonics Screening Information meeting (Year 1)</b>	Thursday 2nd May	<i>For Year 1 parents and carers</i>
<b>Bank Holiday</b>	Monday 6 <sup>th</sup> May	<i>School closed</i>
<b>Year 6 SATs week</b>	Monday 13 <sup>th</sup> May- Thursday 16 <sup>th</sup> May	<i>Statutory assessments for year 6</i>
<b>Year 1 Class assembly</b>	Wednesday 22nd May	<i>For parents and carers of year 1; 9am in school hall</i>
<b>INSET Day</b>	Thursday 23 <sup>rd</sup> May	<i>School closed for staff training</i>
<b>INSET Day</b>	Friday 24 <sup>th</sup> May	<i>School closed for staff training</i>
<b>Sports Day Reception</b>	Monday 24 <sup>th</sup> June	<i>Afternoon- Exact times to be confirmed/Muga</i>
<b>Sports Day Y1-3</b>	Monday 24 <sup>th</sup> June	<i>Morning-Exact times to be confirmed/Field</i>
<b>Sports Day Y4-6</b>	Wednesday 26 <sup>th</sup> June	<i>Morning-exact times to be confirmed/Field</i>
<b>PTA Non-uniform Day</b>	Friday 5th July	<i>Non-uniform day-tombola donation</i>
<b>PTA Summer Fete</b>	Saturday 6 <sup>th</sup> July	<i>Volunteers and helpers required</i>
<b>Year 6 Production</b>	Thursday 11 <sup>th</sup> July <b>Change of date</b>	<i>For year 6 parents and carers; Hall/5pm</i>
<b>Meet the new class teacher/Open Evening</b>	Tuesday 16 <sup>th</sup> July	<i>3.15-5pm</i>
<b>Whole School Picnic</b>	Tuesday 23 <sup>rd</sup> July	<i>3.15pm-4.30pm -celebrate and bring your blanket and picnic goodies you wish to eat. Strictly NUT FREE please.</i>
<b>Year 6 Leavers Assembly</b>	Wednesday 24 <sup>th</sup> July	<i>For year 6 parents and carers; Hall/9-10am</i>

Have a restful weekend.

With my very best wishes,



Headteacher