

# Community Coffee Morning

Thursday 21<sup>st</sup> September 2023

# Welcome

- Miss Cooper – EHA Yr 3 teacher, leading 'Community', RE and PSHE
- Gurjit Chhabra- NSCT outreach team
- Community Coffee Mornings- one Thursday of every month
- Keep an eye out for school communication for information about curriculum Coffee Mornings.

# Welcome

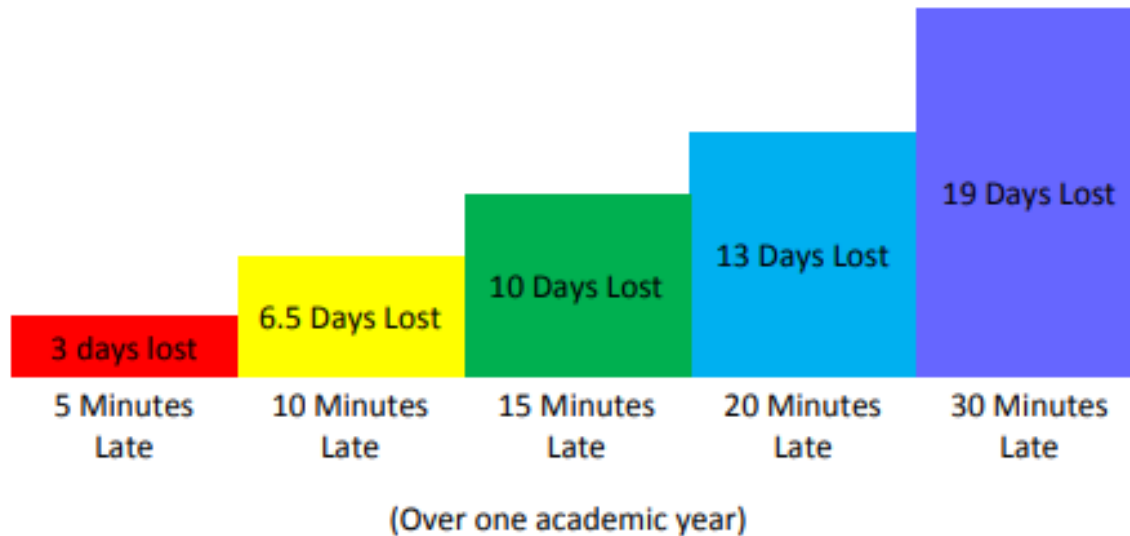
- Today's topics
- Attendance and punctuality
- Uniform
- Healthy lunches

# Attendance

- At a minimum we expect children to be in school for **96%** of the time. This can still equate to 8 days of learning missed.
- If your child's attendance drops down to below 90%, this means almost 4 weeks of lost learning!
- Attendance is tracked weekly and celebrated in our assembly on Wednesdays.
- Parents/carers will be contacted and invited for a meeting with attendance lead (Mr Venn) if your child's attendance is declining to explore why.

# Punctuality

- Every minute counts!
- If a child is late every day, their learning as well as the other children in the classroom is disrupted. Below is a graph how being late to school every day adds up to lost learning time.



# Uniform expectations

- Dark grey tailored trousers, skirt or pinafore
- Dark grey tailored knee length shorts in the summer (optional)
- Red and white checked dress in the summer (optional)
- White shirt (not polo shirt)
- Grey sweatshirt with the academy logo
- Grey cardigans with the academy logo (optional)/could be plain grey
- Socks and tights need to be plain black, grey or white
- EHA tie
- **Please label every item of uniform with your child's name and class**

## Footwear:

- Plain black school shoes
- Plain black flat boots (winter)
- Black shoes should be flat. They should not have any flashing lights as they are distracting for all children. Children that are not in the correct footwear will be asked to change into plimsolls for the rest of the school day.

Please speak to us if you require help with uniform.



# PE kits

- White T-shirt (one given by EHA)
- Black Enfield Height PE sweatshirt
- Plain black shorts or black jogging bottoms
- Black plimsolls (indoor) Black trainers (outdoor)
- All PE kits need to be supplied in a drawstring bag that is clearly labelled with the child's full name and class

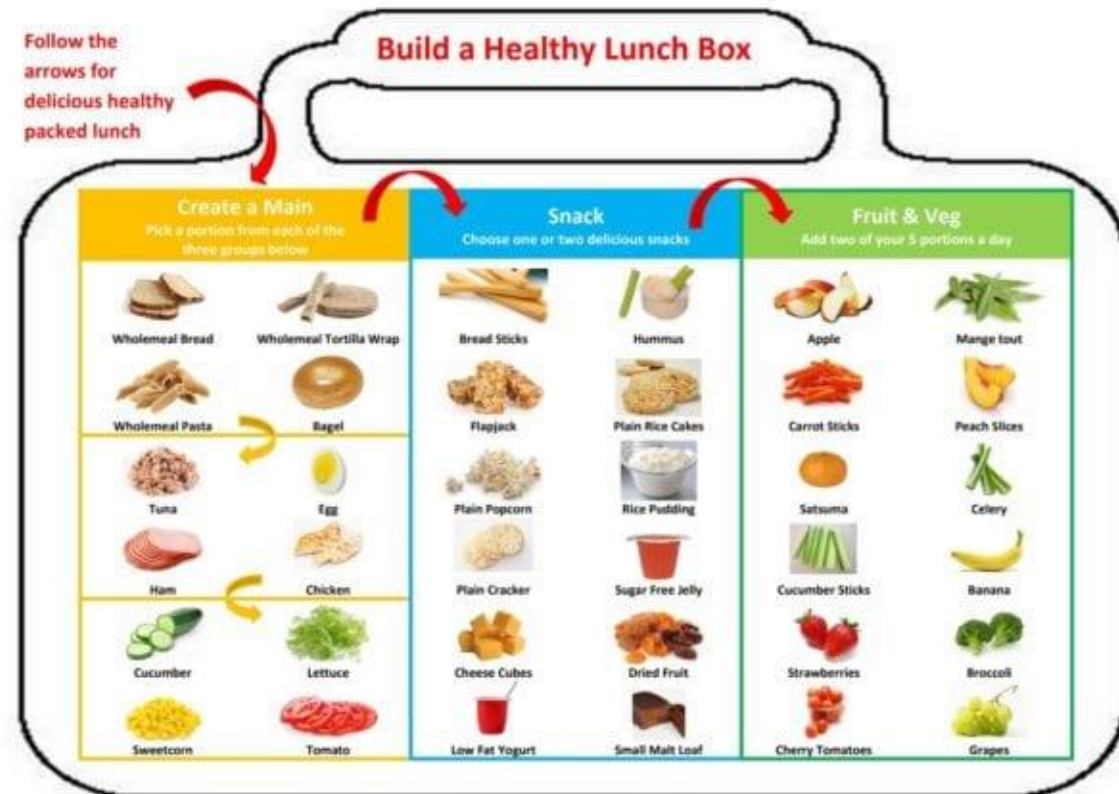


# Other uniform requirements

- All headwear must be plain black, burgundy or white in colour
- Plain gold or silver stud earrings are permitted but never on PE days. Watches are allowed; they need to have plain straps, preferably in black. Expensive jewellery is discouraged
- All children require an academy book bag bearing the school logo, which can be obtained from our main uniform provider
- Our main uniform provider for Enfield Heights Academy is Smiths Schoolwear on Lancaster Road – available to purchase online and be delivered either to your home or to school

# Healthy lunches

- This year all children are entitled to a free school meal- funding coming from the Mayor of London.
- Fruit snack for break time
- Packed lunches
- **No nuts**
- What can a packed lunch look like?
- Variety



# Key upcoming dates

- Community Coffee Mornings-
- 19<sup>th</sup> Oct
- 23<sup>rd</sup> Nov
  
- Macmillan Coffee Morning- 29<sup>th</sup> September
- Early Reading- Reception parents- 2<sup>nd</sup> October
  
- 10<sup>th</sup> October- Hispanic Culture Day
- 12<sup>th</sup> October- Parents Consultations- book on Arbor